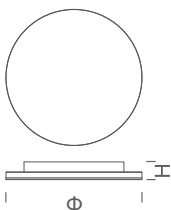


PURATI



Model	Voltage	Current	PF	Wattage	Luminous Flux	W/Φ (mm)	H (mm)	ta (°C)
Disc 220	220-240V~	0.07A/0.045A/0.04A	*0.9 0.95	15W/10W/8W	1350/900/800LM(Warm White) 1350/900/800LM(Neutral White) 1350/900/800LM(Cool White)	220	39	40

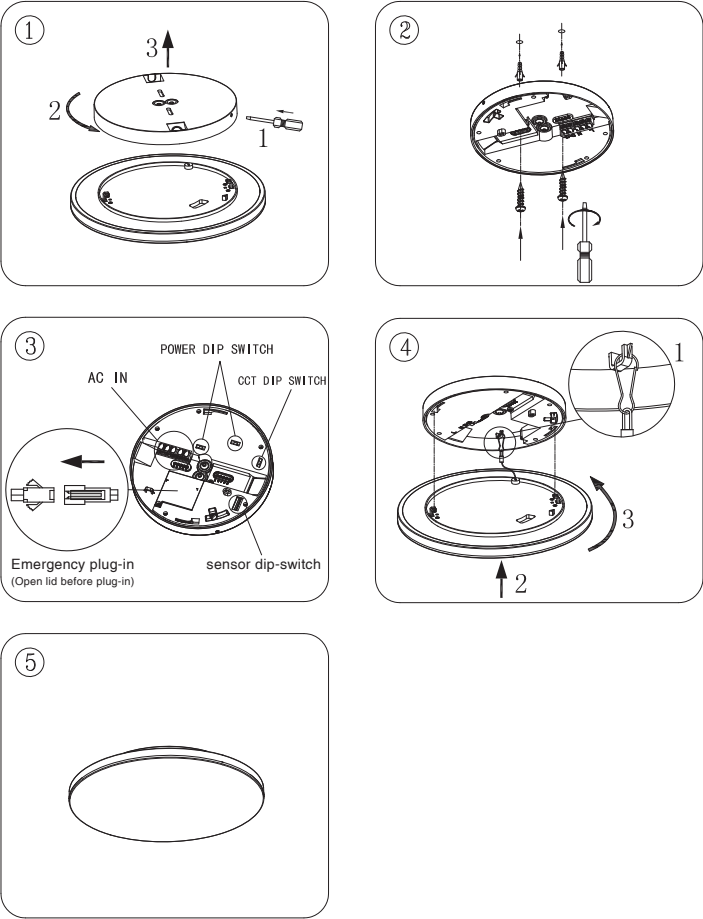
Suitable Version: With Or Without Color Temperature Selectable Function.
Color Temperature: Warm White:2700k-3200k Neutral White:3800k-4200k Cool White:6000k-6600k;

*0.9 Only for Motion Sensor



Installation instruction

General installation steps:

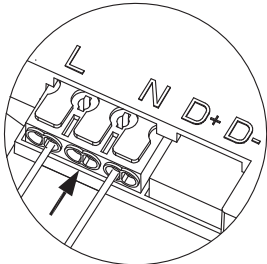


The figure above shows the general installation steps, there are some differences of inner structure between different dimensions and functions. Pls refer to the real

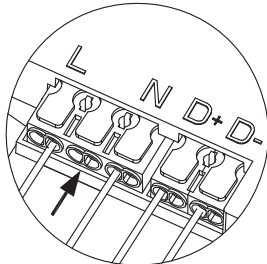
Please choose the way of plug-in in accordance with function, see picture as below:

Dim / Non-dim / Sensor plug-in

DALI plug-in



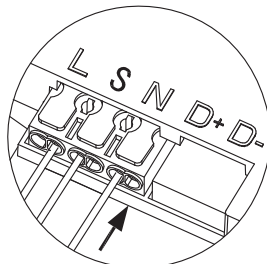
AC IN



AC IN

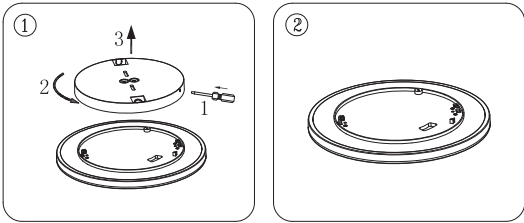
Emergency plug-in

(Please refer to the general emergency manual for details)



AC IN

Light source disassembly instruction



- Always follow this instruction to ensure correct and safe installation and functioning of the luminaire and keep it for future reference.
- Always isolate the power before commencing installation.
- If in doubt, consult a qualified electrician. Ensure that you always install the luminaire to the relevant regulations.
- NOTE: The illuminators of luminaires are non-identical between different models or between same model with different function. Mixed use will lead malfunction of the luminaries or working improperly. Please follow the color label to install if has (**e.g red label matches red label**).

MANUFACTURER DOES NOT TAKE ANY RISKS AND RESPONSIBILITIES ARISING FROM NON-STANDARD OPERATION.

Correct Disposal of this product



This marking indicates that this product should not be disposed with other household wastes throughout the EU. To prevent possible harm to the environment or human health from uncontrolled waste disposal, recycle it responsibly to promote the sustainable reuse of material resources. To return your used device, please use the return and collection systems or contact the retailer where the product was purchased. They can take this product for environmental safe recycling.

Reminder

For safety reason during the transportation and storage, the battery is disconnected.

Please connect the battery before further installation.

Only for emergency lamps